

PART OF THE SE. 1/4, OF SECTION 29, T.6N., R.1W., S.L.B. & M.  
**BEN LOMOND SUITES CONDOMINIUM PROJECT 3RD AMENDMENT**

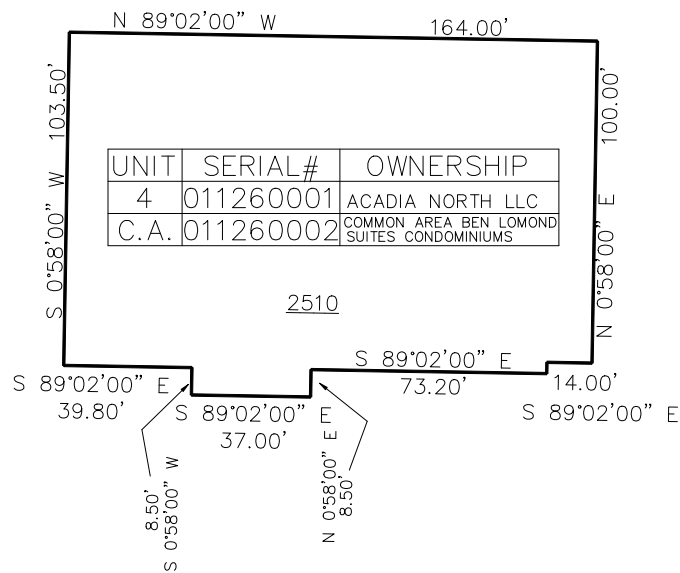
TAXING UNIT: 523

IN OGDEN CITY  
SCALE 1" = 30'

SEE PAGE 75

SEE PAGE 75

SEE PAGE 75



SEE PAGE 75

10' UTILITY & DRAINAGE EASEMENTS EACH  
SIDE OF PROPERTY LINES AS INDICATED  
BY DASHED LINES EXCEPT AS OTHERWISE  
SHOWN.

FOR COMPLETE ENC DATA SEE  
ORIGINAL DEDICATION PLAT IN  
BOOK 91, PAGE 44-45 OF RECORDS.